

UNCOUNT

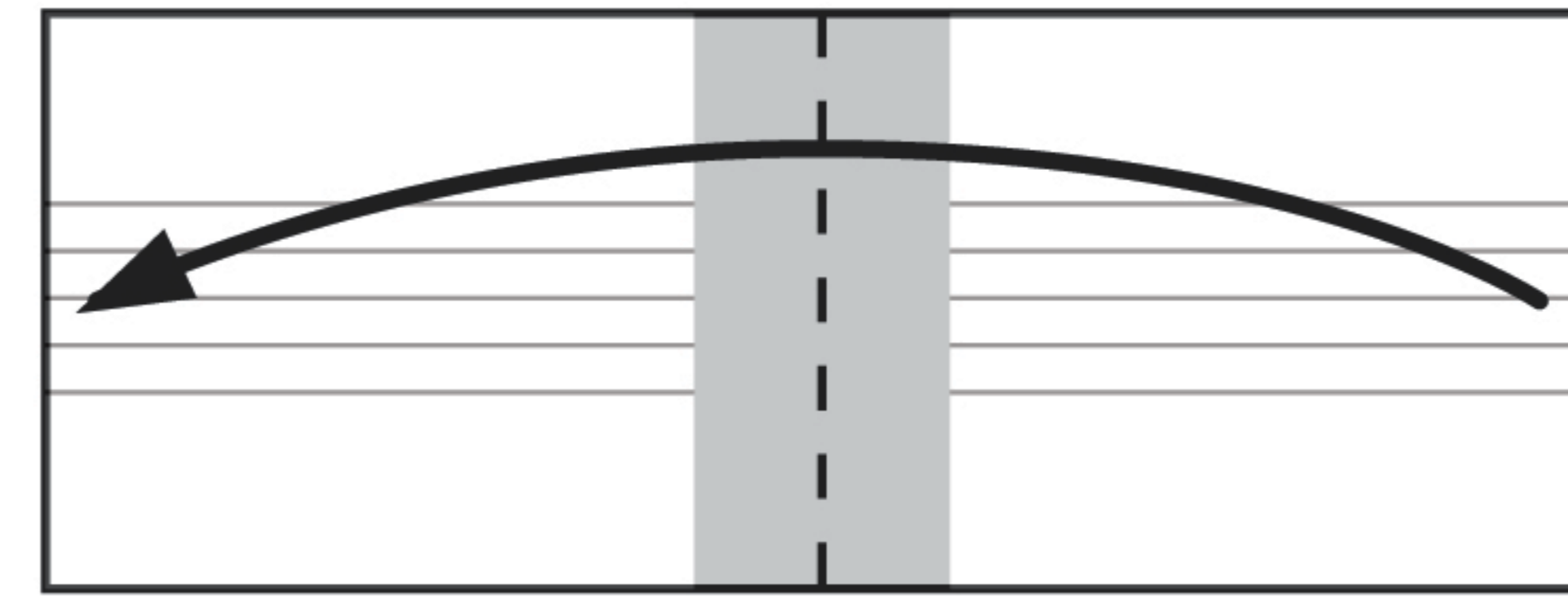
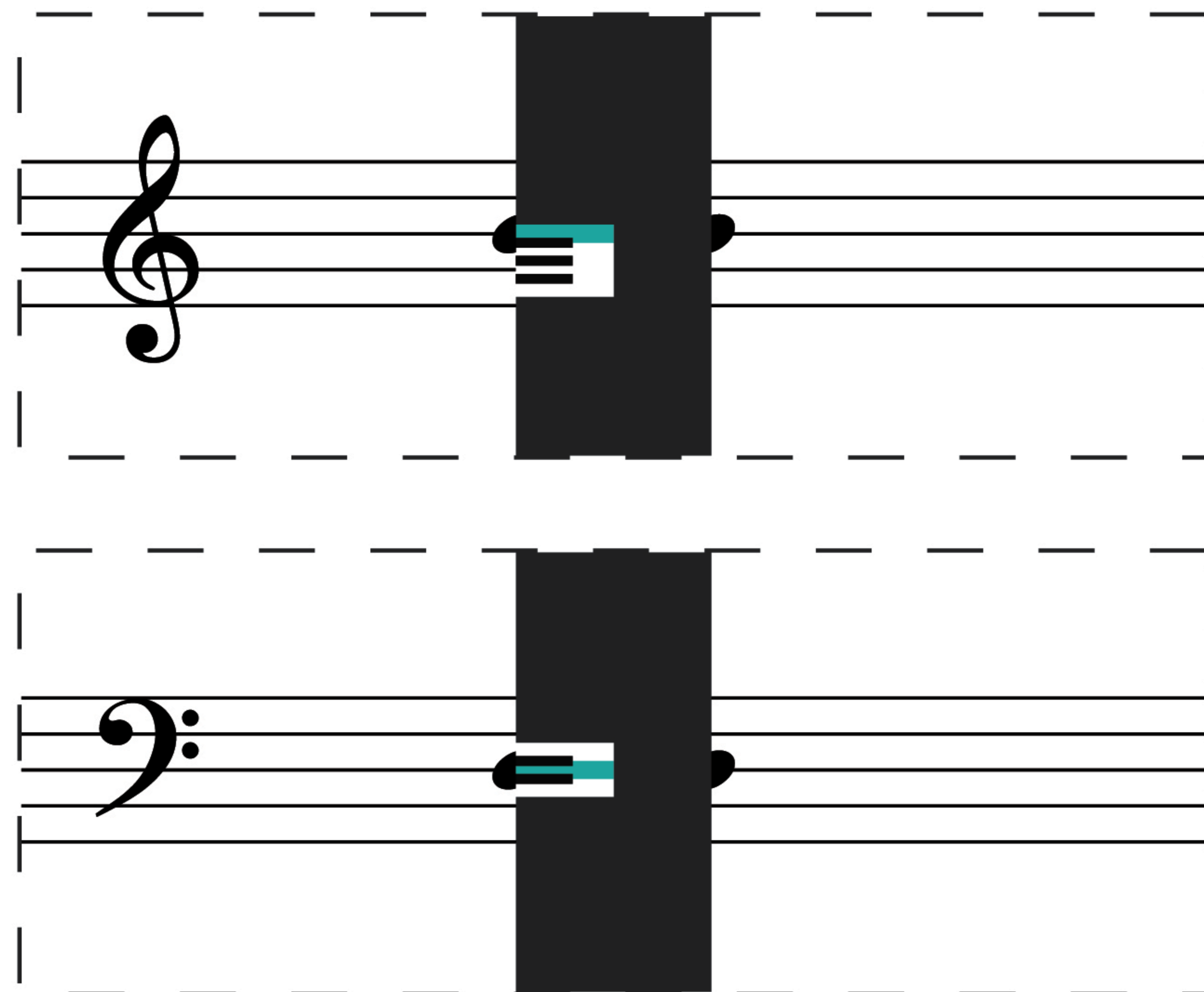
This teaching aid is part of the UNCOUNT project.

Contents:

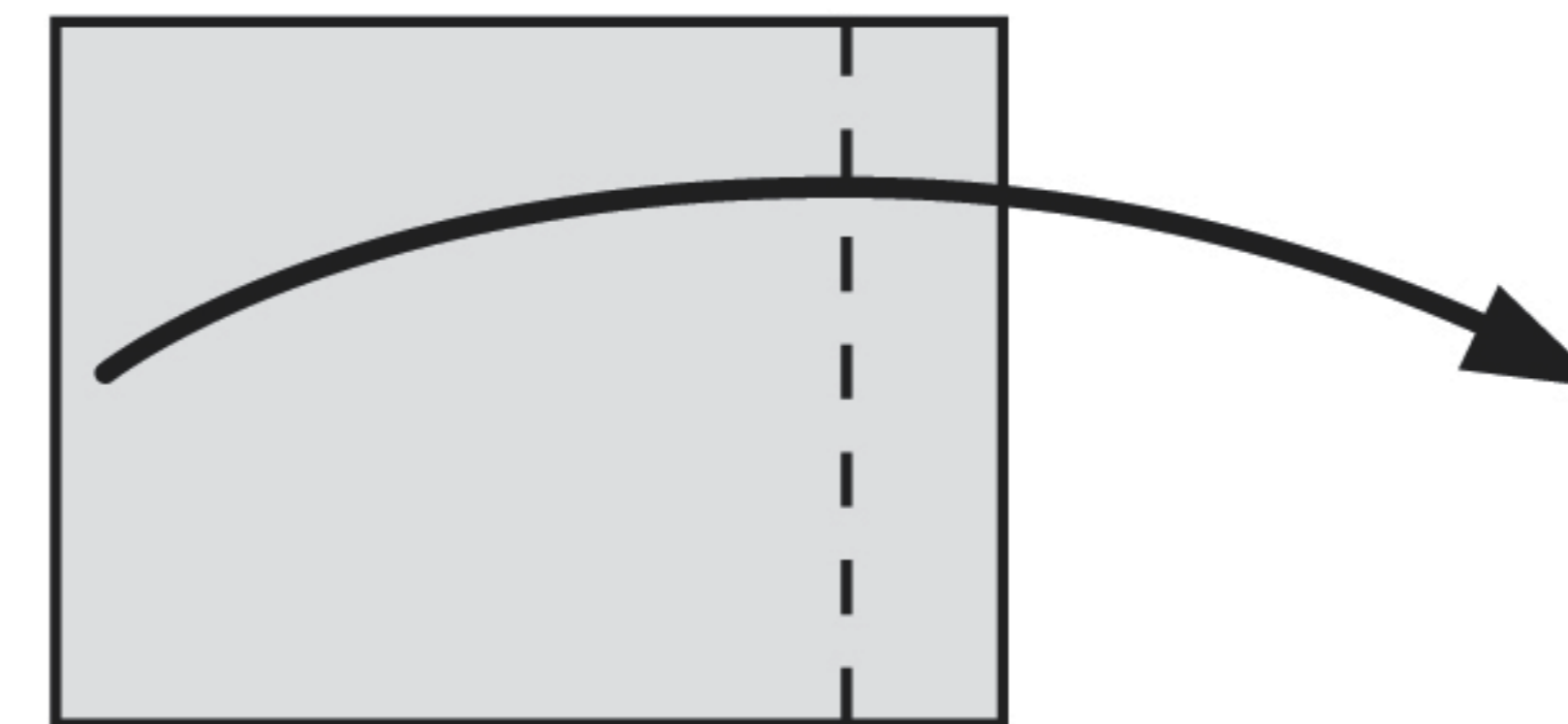
With this template, total 3 pages, you can create 18 cards for practicing or teaching sight reading.

Instruction:

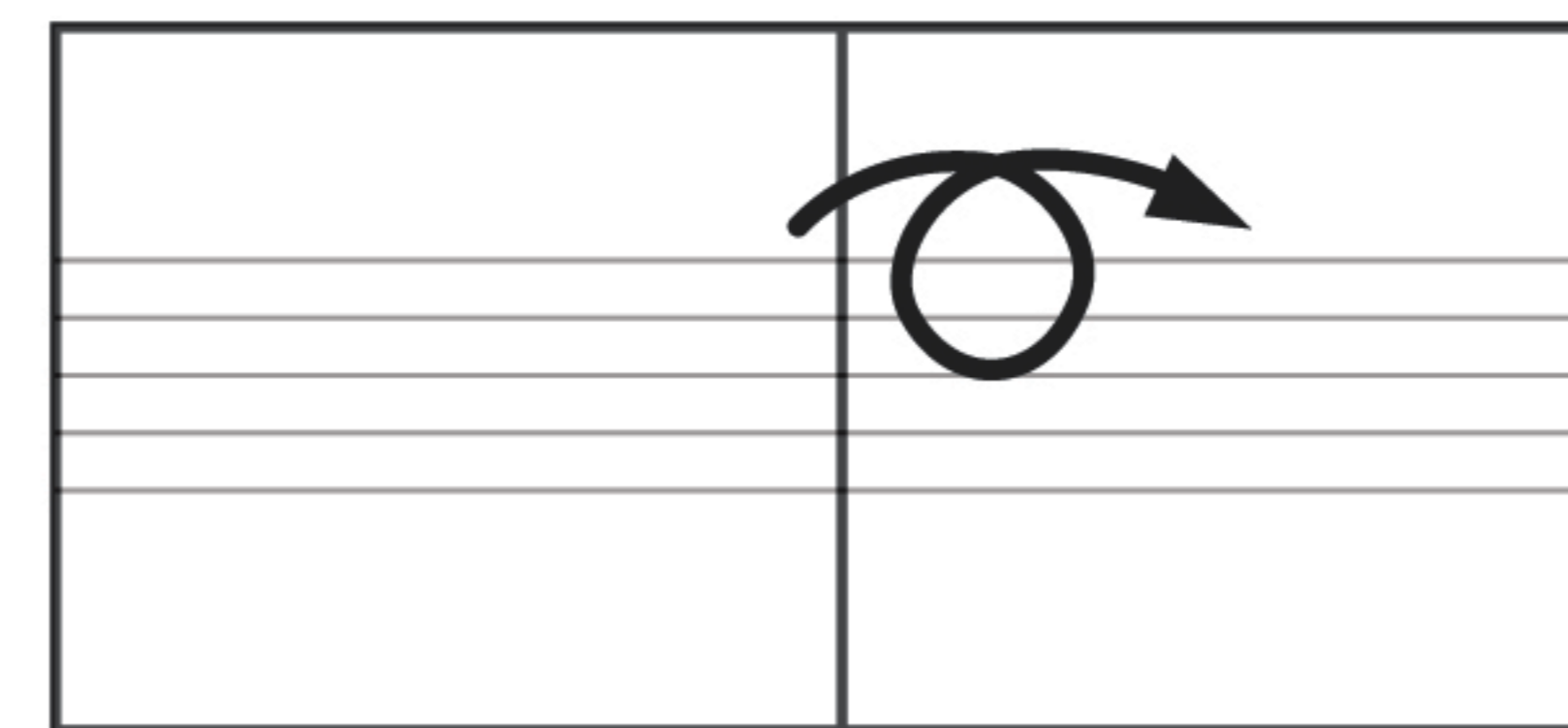
1. Cut out the 18 template from each page.
2. Fold every template as show in the instruction on this page.
3. Visit www.uncount.com to learn how to UNCOUNT today.



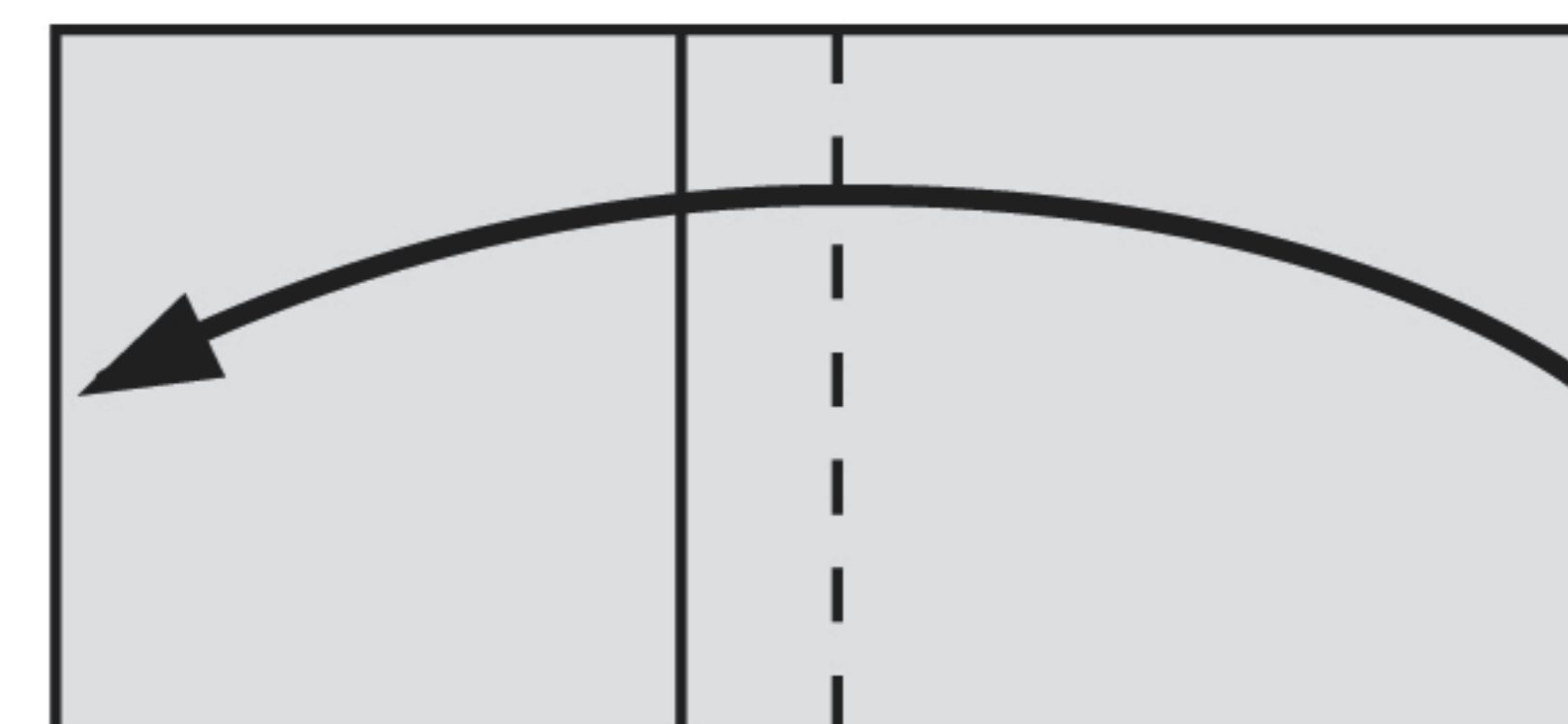
1. Fold in half



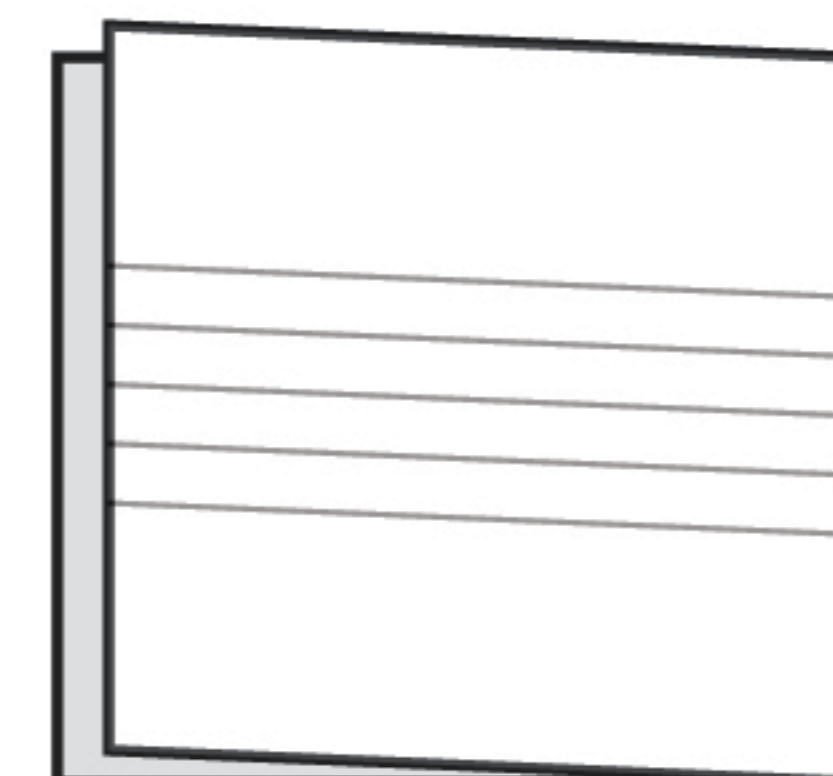
2. Fold in the dotted line



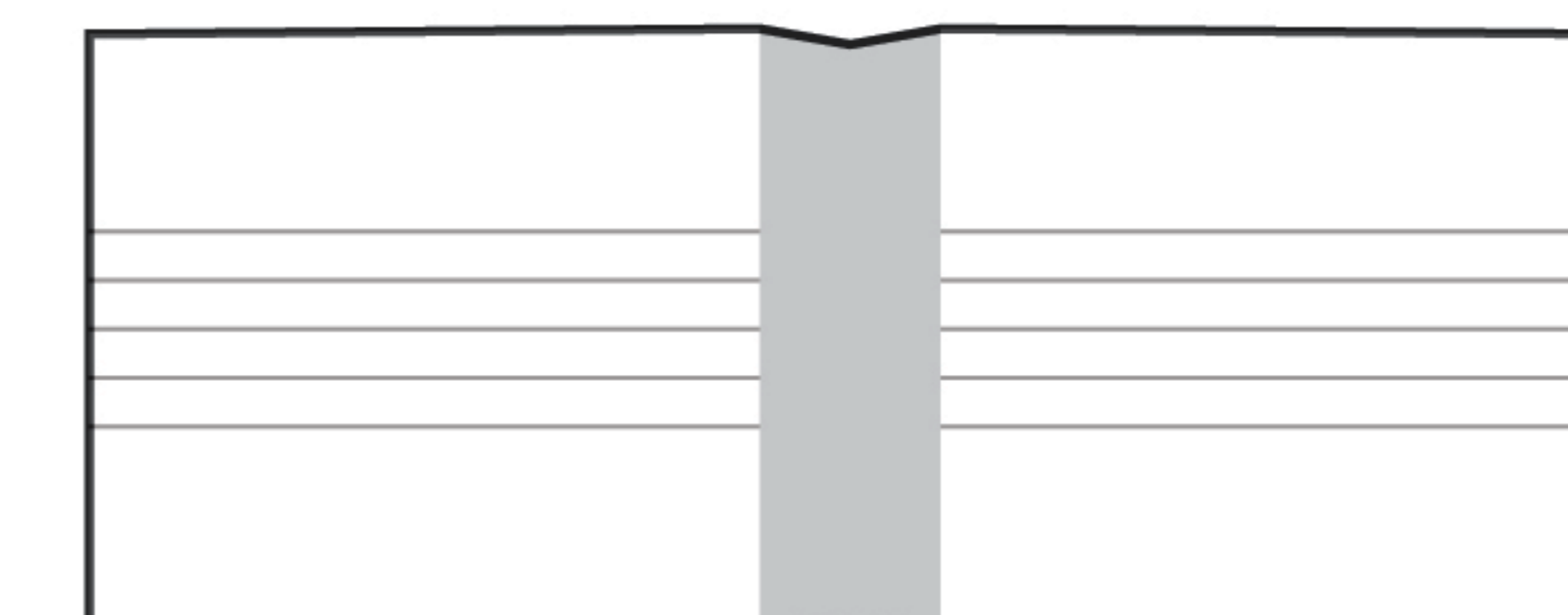
3. Turn over



4. Fold in the dotted line



5. Unfold



6. Finished

UNCOUNT

This teaching aid is part of the UNCOUNT project.

A 2x4 grid of musical staves for piano fingering practice. Each staff contains a treble clef and a piano key diagram. The diagrams show the left hand (black) and right hand (white) fingers positioned on the keys. The sequence of diagrams is: 1. LH: 1-2-3-4-5 on C4-D4-E4-F4-G4; RH: 1-2-3-4-5 on C4-D4-E4-F4-G4. 2. LH: 1-2-3-4-5 on C4-D4-E4-F4-G4; RH: 1-2-3-4-5 on D4-E4-F4-G4-A4. 3. LH: 1-2-3-4-5 on C4-D4-E4-F4-G4; RH: 1-2-3-4-5 on E4-F4-G4-A4-B4. 4. LH: 1-2-3-4-5 on C4-D4-E4-F4-G4; RH: 1-2-3-4-5 on F4-G4-A4-B4-C5. 5. LH: 1-2-3-4-5 on C4-D4-E4-F4-G4; RH: 1-2-3-4-5 on G4-A4-B4-C5. 6. LH: 1-2-3-4-5 on C4-D4-E4-F4-G4; RH: 1-2-3-4-5 on A4-B4-C5. 7. LH: 1-2-3-4-5 on C4-D4-E4-F4-G4; RH: 1-2-3-4-5 on B4-C5. 8. LH: 1-2-3-4-5 on C4-D4-E4-F4-G4; RH: 1-2-3-4-5 on C5.

A 2x4 grid of musical staves for piano fingering practice. Each staff contains a treble clef and a piano key diagram. The diagrams show the left hand (black) and right hand (white) fingers positioned on the keys. The sequence of diagrams is: 1. LH: 1-2-3-4-5 on C4-D4-E4-F4-G4; RH: 1-2-3-4-5 on D4-E4-F4-G4-A4. 2. LH: 1-2-3-4-5 on C4-D4-E4-F4-G4; RH: 1-2-3-4-5 on E4-F4-G4-A4-B4. 3. LH: 1-2-3-4-5 on C4-D4-E4-F4-G4; RH: 1-2-3-4-5 on F4-G4-A4-B4-C5. 4. LH: 1-2-3-4-5 on C4-D4-E4-F4-G4; RH: 1-2-3-4-5 on G4-A4-B4-C5. 5. LH: 1-2-3-4-5 on C4-D4-E4-F4-G4; RH: 1-2-3-4-5 on A4-B4-C5. 6. LH: 1-2-3-4-5 on C4-D4-E4-F4-G4; RH: 1-2-3-4-5 on B4-C5. 7. LH: 1-2-3-4-5 on C4-D4-E4-F4-G4; RH: 1-2-3-4-5 on C5. 8. LH: 1-2-3-4-5 on C4-D4-E4-F4-G4; RH: 1-2-3-4-5 on D5.

UNCOUNT

This teaching aid is part of the UNCOUNT project.

A 4x4 grid of musical staves for the left hand. Each staff contains a bass clef and a stylized piano keyboard graphic with a teal highlight on the middle C key. The grid is enclosed in a dashed border.

A 4x4 grid of musical staves for the right hand. Each staff contains a bass clef and a stylized piano keyboard graphic with a teal highlight on the middle C key. The grid is enclosed in a dashed border.